

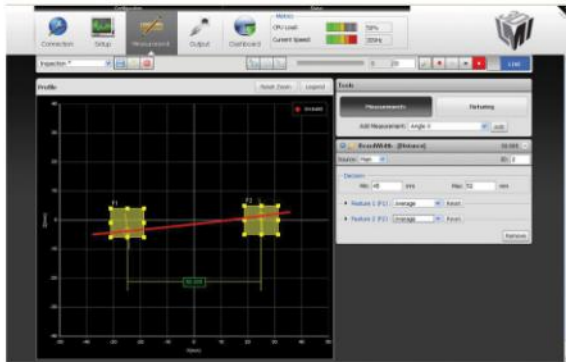
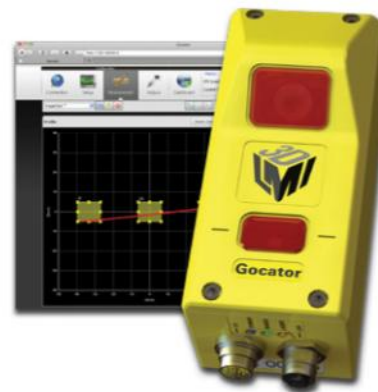
# Gocator 2000 FAMILY

## FLEXIBLE 3D LASER LINE PROFILERS

A family of 3D line profilers designed for part inspection, gauging and error proofing using a series of easy to use built-in tools to measure key parameters

STANDALONE, SMART INSPECTION SENSORS  
WEB BROWSER SETUP AND CONTROL  
COMPACT, LIGHTWEIGHT, EASY TO MOUNT

Gocator 2000 is a family of 3D line profile sensors for various measurement and inspection applications. Designed for the factory floor with high emphasis on ease of use, yet flexible enough for unique needs and applications.

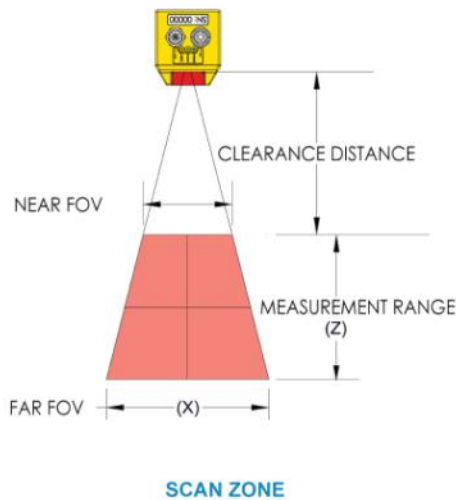


Gocator user interface displaying one of the many built-in measurement tools

- **EASE OF USE:** The built in web server runs on all standard compliant internet browsers, on any computer, and on any operating system. With no additional software to install, it makes out of the box setup and configuration fast and easy.
- **STANDALONE & SCALABLE:** Single sensors require no additional control boxes, amplifiers, external controllers, or PCs. Gocator can be effortlessly scaled from an additional "buddy" sensor to multiple sensor systems using our Network controllers connecting to a host over a standard high speed ethernet interface.
- **FLEXIBLE CONFIGURATION:** Accessing the Gocator's measurement tools, the feature rich GUI interface allows users to select the measurement area, speed, exposure, resolution, triggering, output and more to suit various application needs.
- **COMPACT & LIGHT:** With a small footprint, Gocator's can be easily mounted in tight spaces and on robot arms, all with standard cabling.

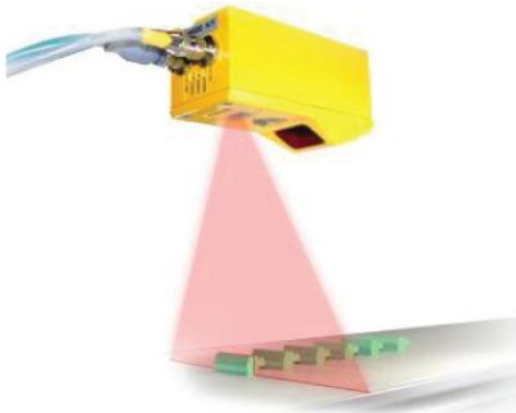
# Gocator 2000 FAMILY

## SPECIFICATIONS

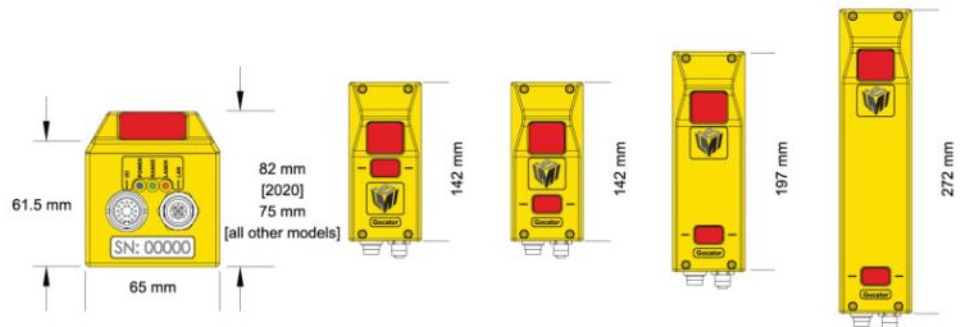


Model	2020	2030	2040	2050	2070	2080
Scan Rate	300Hz to 5000 Hz (dependent on window size)					
units: millimeters						
Resolution (Z)	0.003-0.011	0.008-0.018	0.017-0.049	0.025-0.092	0.07-0.23	0.094-0.55
Resolution (X)	0.03-0.04	0.088-0.15	0.19-0.34	0.30-0.60	0.55-1.1	0.75-2.2
Clearance Distance (CD)	40	90	190	300	400	350
Measurement Range (MR)	25	80	210	400	500	800
Field of View (FOV)	14 - 26	47 - 85	96 - 194	158 - 365	308 - 687	390 - 1260
Laser Class*	2M	2M	3R	3R	3B	3B
Interface	100 Mbaud Ethernet					
Inputs	Differential Encoder Input, Laser Safety Enable, Trigger					
Outputs	2 x Digital output, RS-485 Serial (115 kBaud), Analog output (4 - 20 mA)					
Input Voltage (Power)	+24 to 48 VDC (10 Watts); RIPPLE +/- 10%					
Size	65x82x142	65x75x142	65x75x197	65x75x272	65x75x272	65x75x272
Weight	<1.5 kg					
Housing	Gasketed aluminum enclosure, IP67					

\*Some models are available in other laser classes- specifications and pricing will vary



A Gocator 2030 performing 3D profile measuring of objects on a conveyor



LMI Technologies Inc. is a market leader in fast, accurate, and reliable scanning technology for industry. Today we have over 60,000 sensors operating in the field. LMI Technologies Inc. provides responsive, reliable, scanning technology for better optimization solutions for industry.

© 2011 LMI Technologies. All rights reserved. Information contained in this brochure is subject to change without notice.

www.lmi3d.com

North & South America: +1 604 636 1011  
 Europe & Asia: +31 45 850 7000