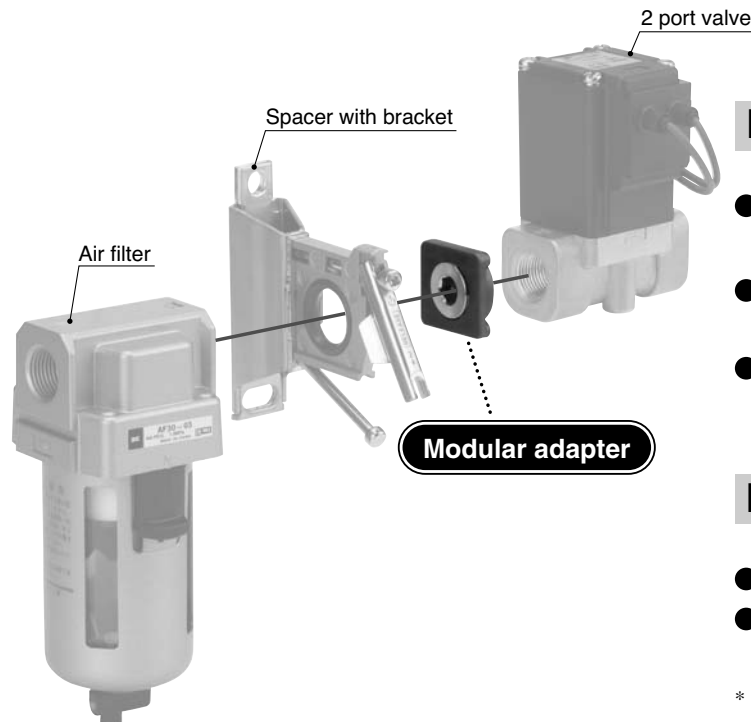
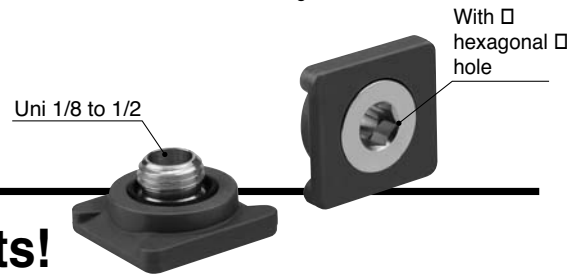


Modular Adapter Series E210/310/410

Easy connection to existing products!



Flexible mounting

- Can be connected to existing products such as 2 port valves as well as F.R.L. Unit
- Can be freely rotated, thus allowing a wide selection of mounting directions
- Can be connected to existing products of different size
 Ex.: AF30+ARG20

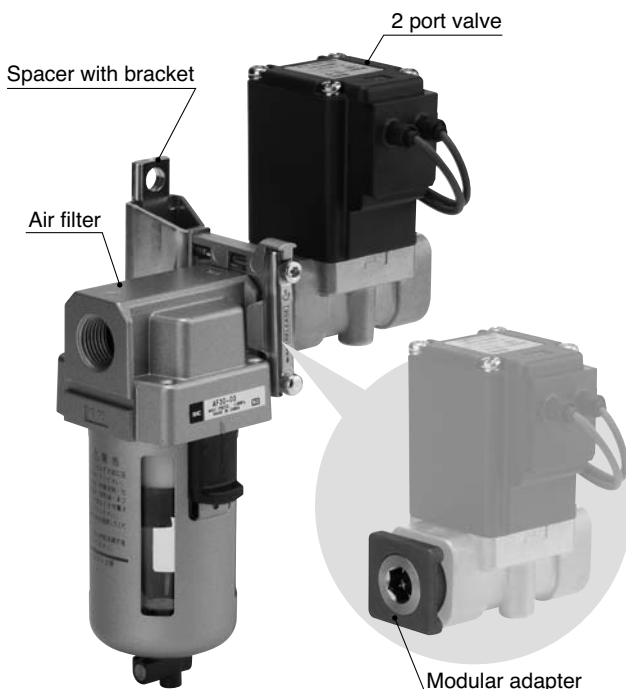
Reduced space/piping maintenance cost

- Can be connected/disconnected without rotation
- Fittings, tube, etc. not required for connection

* Refer to page 7 to 10 for applicable products.

Mounting Example

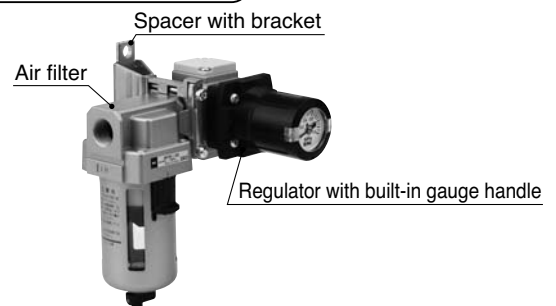
Air filter + 2 port valve



Air filter + Regulator with built-in gauge handle

- Location of pressure gauge can be fixed depending on the installation location.

Ex. 1: Front face mounting

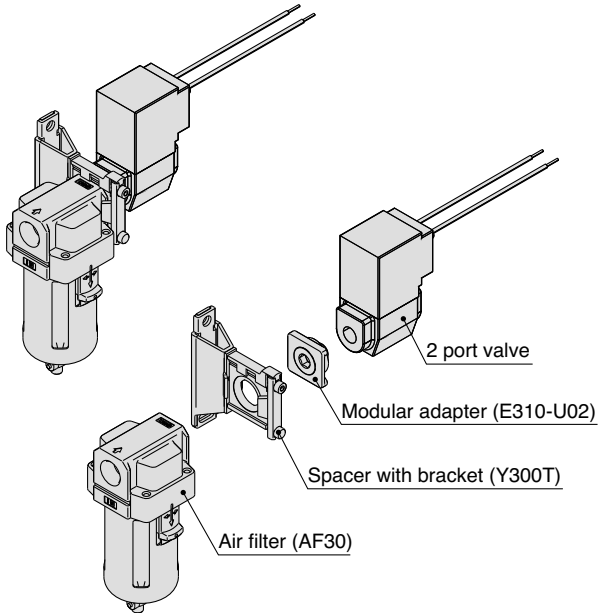


Ex. 2: Tilted position mounting

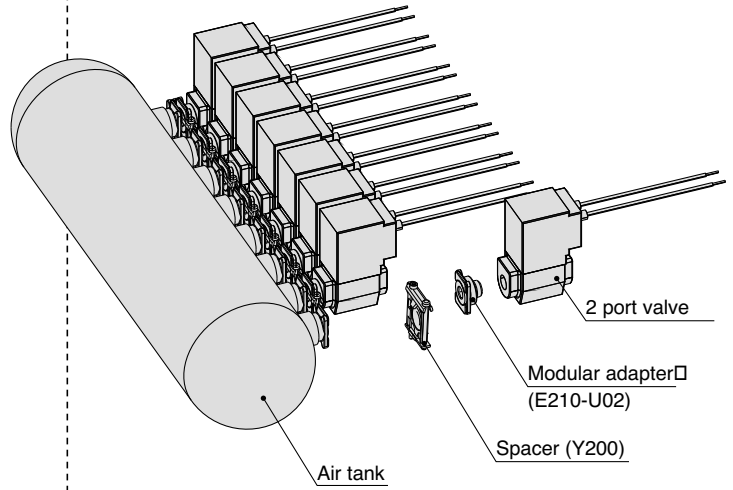


Application Examples

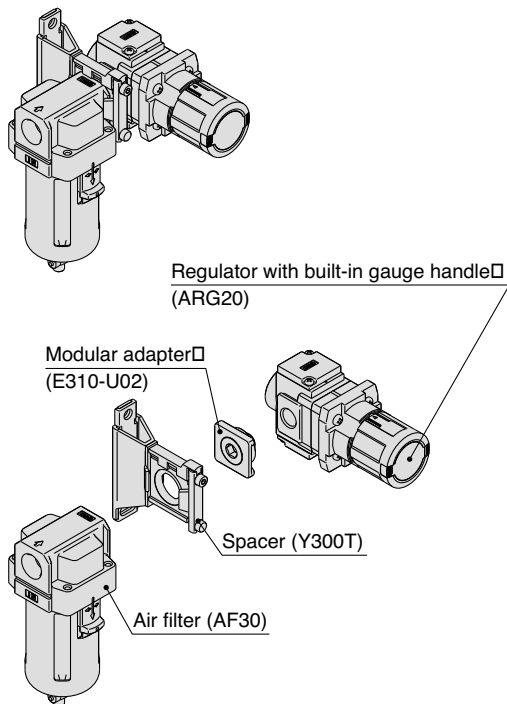
Ex. 1 Filter + 2 port valve



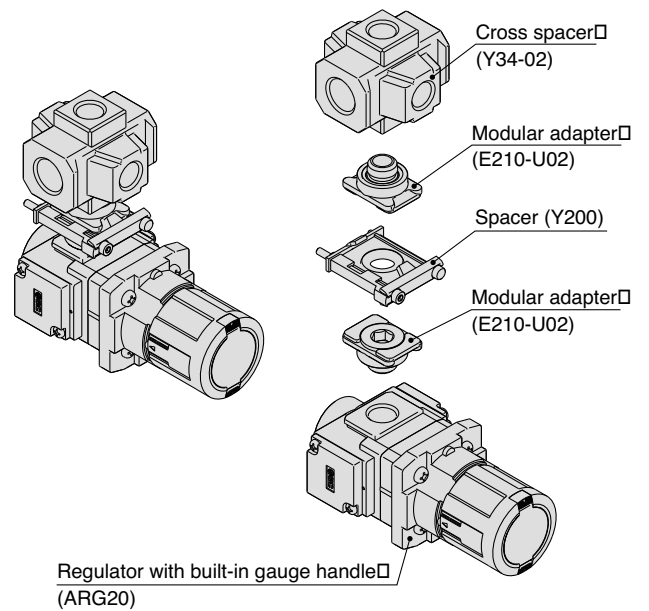
Ex. 2 2 port valve connection to air tank



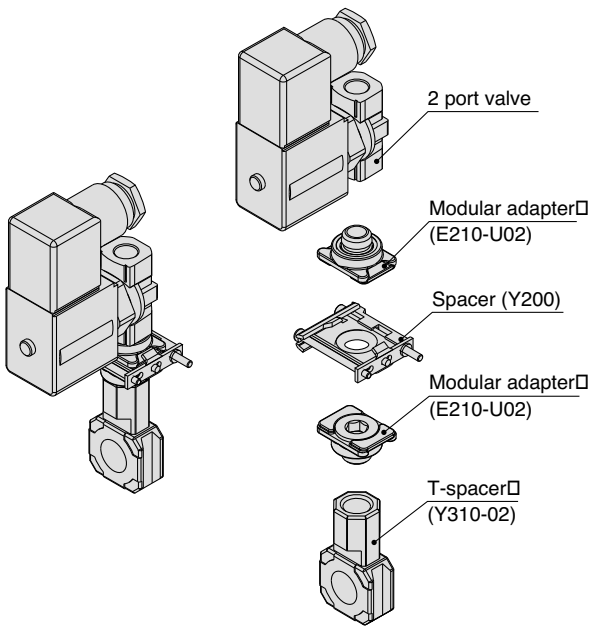
Ex. 3 Front face mounting of regulator with built-in gauge handle



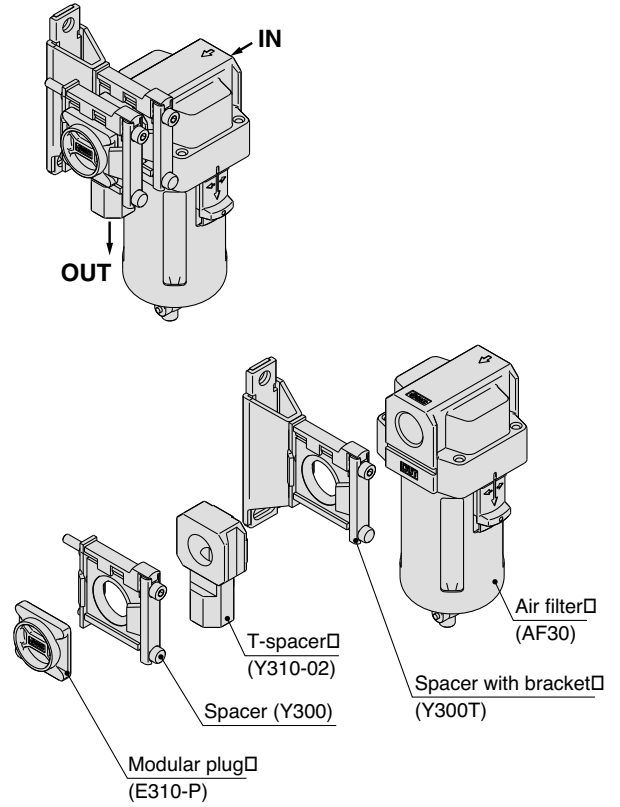
Ex. 4 Cross spacer to branch mounting



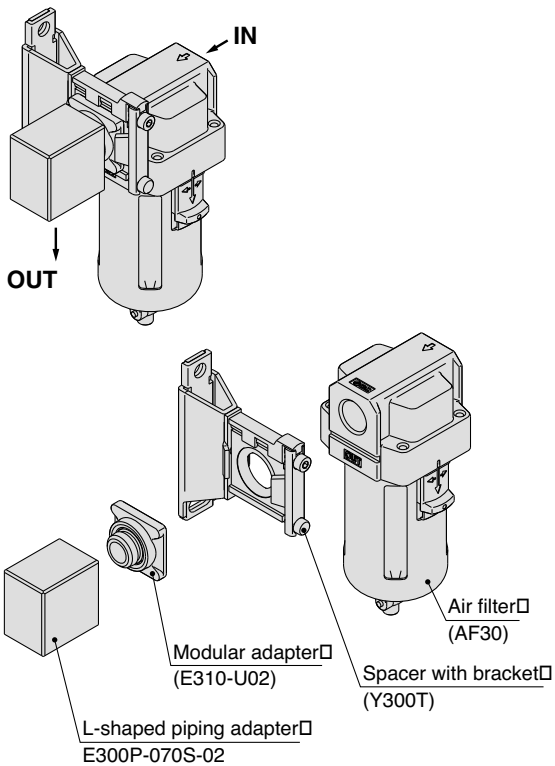
Ex. 5 T-spacer to branch mounting (1)



Ex. 6 T-spacer to downward face mounting (2)



Ex. 7 Downward face mounting for L-shaped piping adapter



Modular Adapter Series *E210/310/410*

How to Order

E310 - U 03

Size

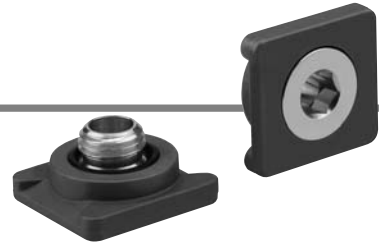
| |
|-----|
| 210 |
| 310 |
| 410 |

Thread

| | |
|---|------------|
| U | Uni thread |
|---|------------|

Piping port size

| Symbol | Port size | Size | | |
|--------|-----------|------------|-----|-----|
| | | Uni thread | 210 | 310 |
| 01 | 1/8 | ● | — | — |
| 02 | 1/4 | ● | ● | ● |
| 03 | 3/8 | — | ● | ● |
| 04 | 1/2 | — | — | ● |



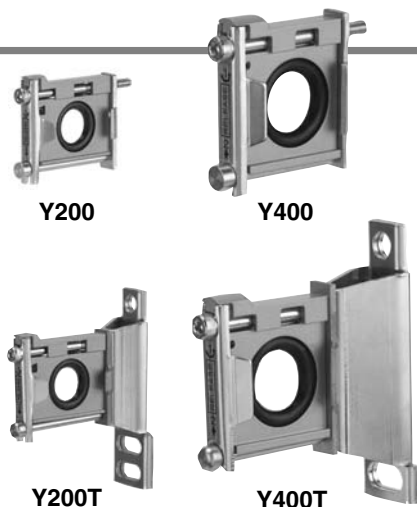
Specifications

| Model | E210 | | E310 | | E410 | | |
|-------------------------------|------|-----|---------------------------|---------|------|-----|-----|
| Port size | 1/8 | 1/4 | 1/4 | 3/8 | 1/4 | 3/8 | 1/2 |
| Piping I.D. | ø6 | ø8 | ø8 | ø10 | ø8 | ø10 | ø12 |
| Fluid | □ | □ | □ | Air | □ | □ | □ |
| Ambient and fluid temperature | □ | □ | □-5 to 60°C (No freezing) | | □ | □ | □ |
| Proof pressure | □ | □ | □ | 1.5 MPa | □ | □ | □ |
| Maximum operating pressure | □ | □ | □ | 1.0 MPa | □ | □ | □ |
| Mass (g) | 26 | 25 | 38 | 38 | 60 | 62 | 68 |

Applicable Attachment Part Number

| Applicable models | E210 | E310 | E410 |
|---------------------|-------|-------|-------|
| Spacer | Y200 | Y300 | Y400 |
| Spacer with bracket | Y200T | Y300T | Y400T |

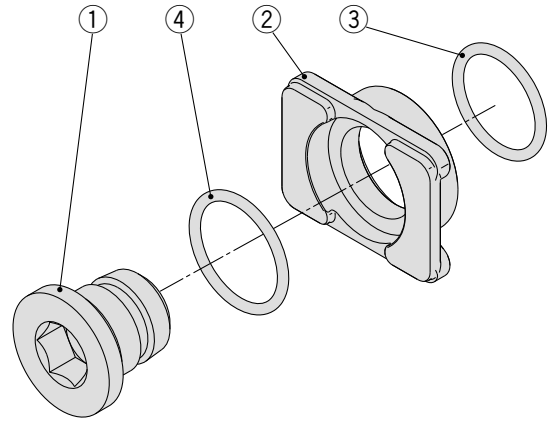
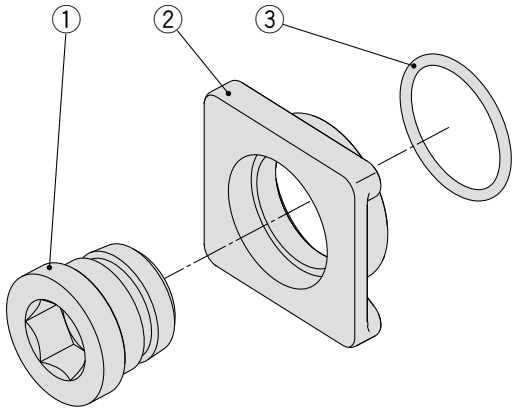
* Refer to page 6 for detailed dimensions.



Construction

E210-U01
E310-U02, U03
E410-U02, U03, U04

E210-U02



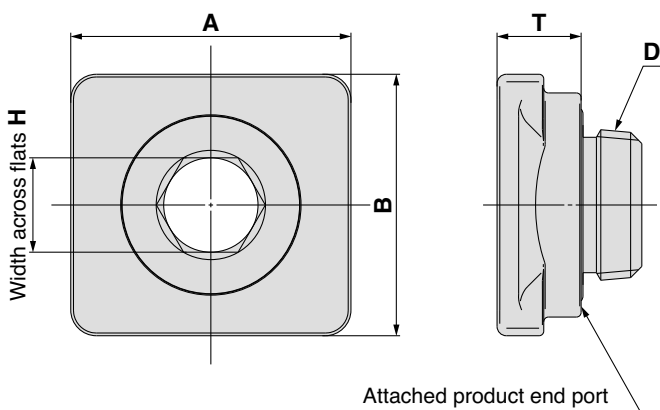
Component parts

| No. | Description | Material |
|-----|--------------|---------------|
| 1 | Joint nipple | Brass□ |
| 2 | Adapter | Zinc die-cast |

Replacement parts

| No. | Description | Material | Part no. | | | | |
|-----|-------------|----------|-------------------|-------------------|-----------------------|-----------------------|-------------------|
| | | | E210-U01 | E210-U02 | E310-U02□ E410-U02 | E310-U03□ E410-U03 | E410-U04 |
| 3 | O-ring | NBR□ | E210P-040S | E210P-030S | E210P-030S | E310P-030S | E410P-030S |
| 4 | O-ring | NBR | — | E210P-050S | — | — | — |

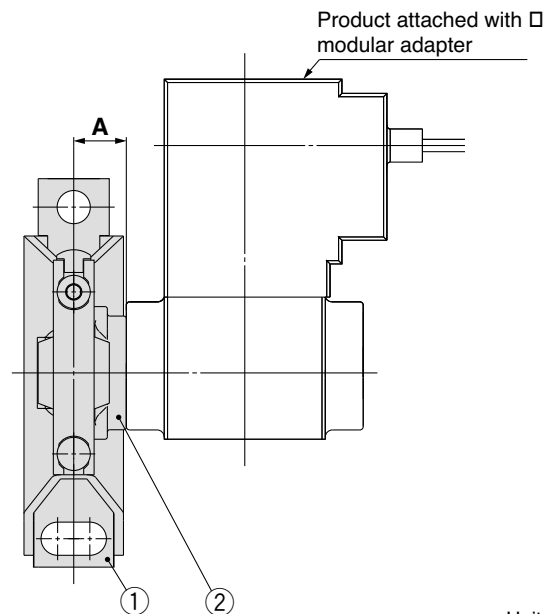
Dimensions



Unit: mm

| Part no. | D Uni thread | A | B | T | Width across flats H |
|-----------------|-----------------|-----|-----|---|-------------------------|
| E210-U01 | 1/8□ | 28□ | 21□ | □ | 6□ |
| E210-U02 | 1/4□ | □ | □ | □ | 8□ |
| E310-U02 | 1/4□ | 30□ | 28□ | □ | 8□ |
| E310-U03 | 3/8□ | □ | □ | 9 | 10□ |
| E410-U02 | 1/4□ | □ | □ | □ | 8□ |
| E410-U03 | 3/8□ | 36 | 36 | □ | 10□ |
| E410-U04 | 1/2 | □ | □ | □ | 12 |

Mounting Dimensions



Unit: mm

| ① Spacer with □ bracket | ② Modular adapter | A |
|-------------------------|-------------------|-------|
| Y200T□ | E210-U01 to U02□ | 10.6□ |
| Y300T□ | E310-U02 to U03□ | 11.1□ |
| Y400T | E410-U02 to U04 | 11.6 |

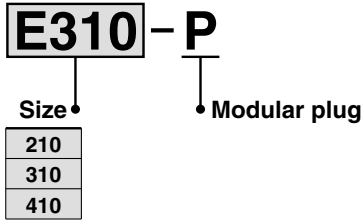
Note) Y200 to Y400 spacers share the same dimensions.

Series E210/310/410

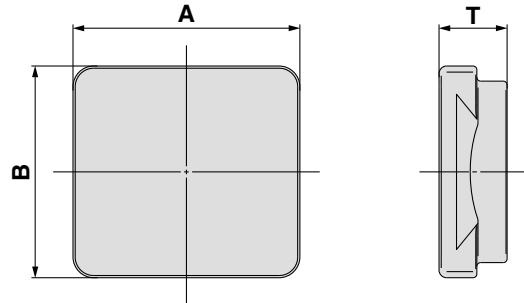
Option

Modular Plug

How to Order



Dimensions

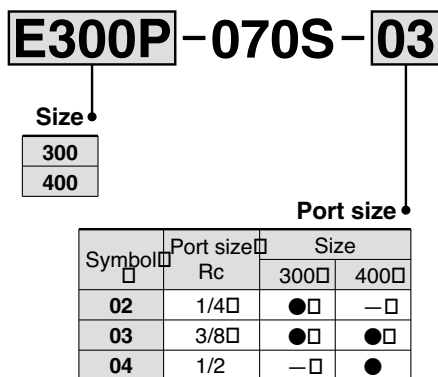


Unit: mm

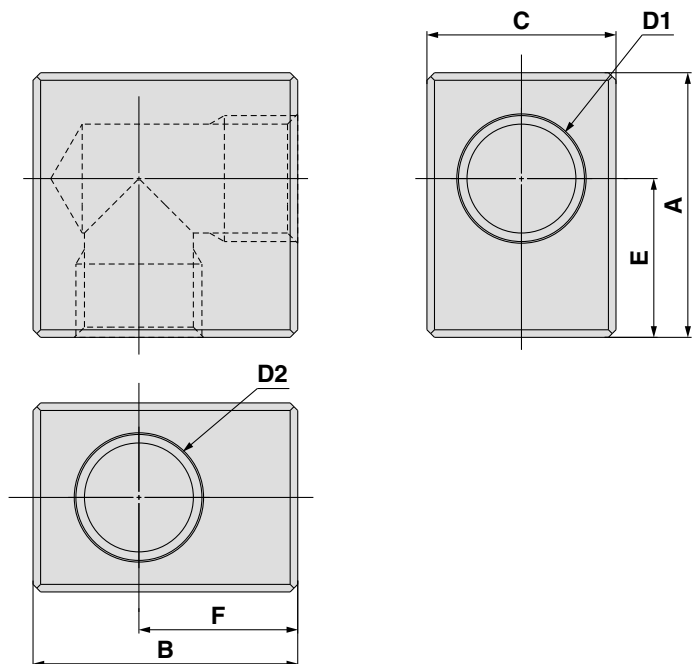
| Part no. | A | B | T | Applicable spacer | |
|----------|-----|-----|---|-------------------|---------------------|
| | | | | Spacer | Spacer with bracket |
| E210-P | 28□ | 21□ | □ | Y200□ | Y200T□ |
| E310-P | 30□ | 28□ | 9 | Y300□ | Y300T□ |
| E410-P | 36 | 36 | | Y400 | Y400T |

L-Shaped Piping Adapter

How to Order



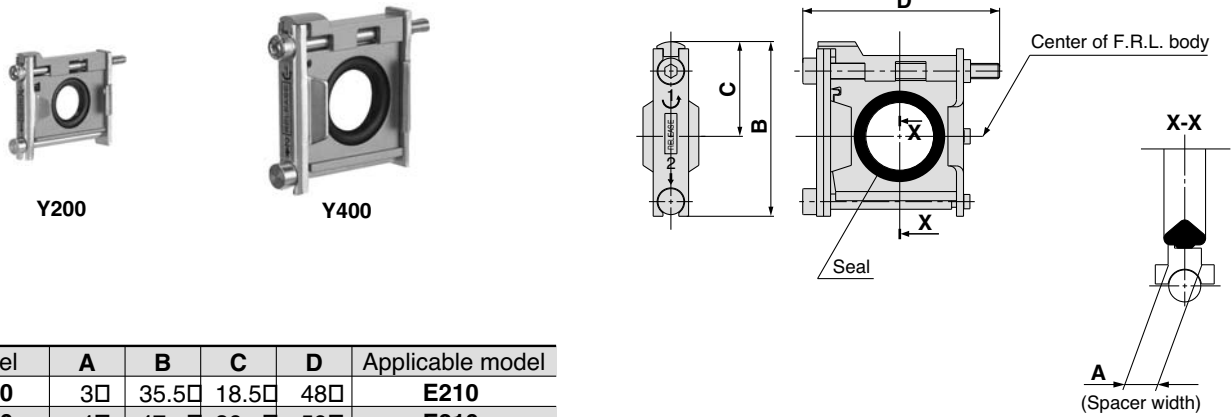
Dimensions



(mm)

| Part no. | D1 | D2 | A | B | C | E | F |
|---------------|--------|--------|-----|-----|-----|-------|-------|
| E300P-070S-02 | Rc1/4□ | Rc1/4□ | 32□ | 32□ | 20□ | 21 □ | 21 □ |
| E300P-070S-03 | Rc3/8□ | Rc3/8□ | 35□ | 35□ | 25□ | 21 □ | 21 □ |
| E400P-070S-03 | Rc3/8□ | Rc3/8□ | 45□ | 45□ | 25□ | 27.5□ | 27.5□ |
| E400P-070S-04 | Rc1/2 | Rc1/2 | 45 | 45 | 30 | 27.5 | 27.5 |

Spacer

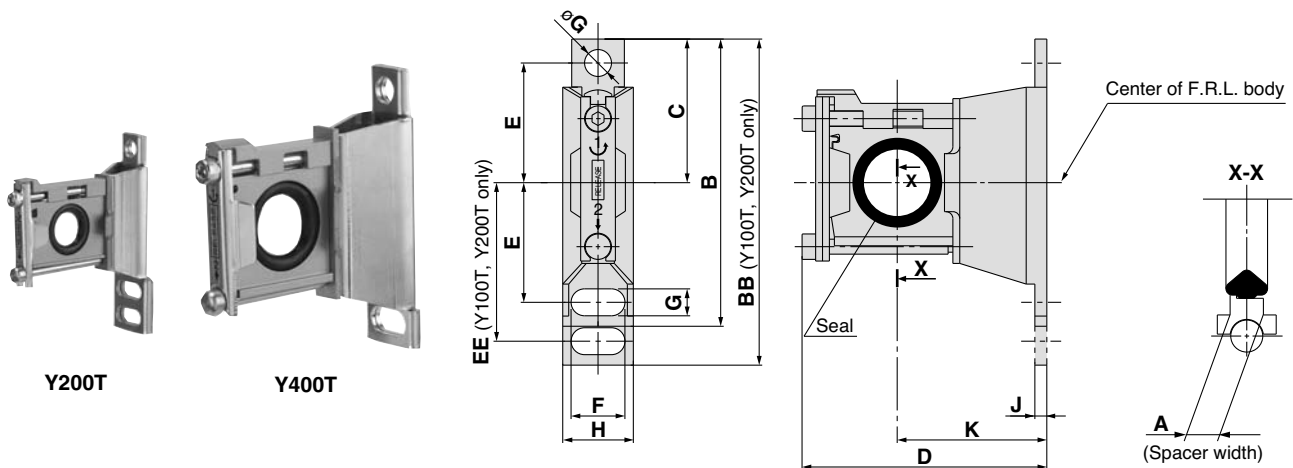


| Model | A | B | C | D | Applicable model |
|-------|----|-------|-------|-----|------------------|
| Y200 | 3□ | 35.5□ | 18.5□ | 48□ | E210 |
| Y300 | 4□ | 47 □ | 26 □ | 59□ | E310 |
| Y400 | 5 | 57 | 31 | 65 | E410 |

Replacement parts

| Description | Material | Part no. | | |
|-------------|----------|------------|------------|------------|
| | | Y200 | Y300 | Y400 |
| Seal | HNBR | Y200P-061S | Y300P-060S | Y400P-060S |

Spacer with Bracket



| Model | A | B | BB | C | D | E | EE | F | G | øG | H | J | K | Applicable model |
|-------|----|-----|-----|-----|------|-----|-----|-----|------|------|-----|------|-----|------------------|
| Y200T | 3□ | — | 67□ | 29□ | 53 □ | 24□ | 33□ | 12□ | 5.5□ | 5.5□ | 19□ | 3.2□ | 30□ | E210 |
| Y300T | 4□ | 82□ | —□ | 41□ | 68 □ | 35□ | —□ | 14□ | 7 □ | 7 □ | 21□ | 4 □ | 41□ | E310 |
| Y400T | 5 | 96 | —□ | 48 | 81.5 | 40 | —□ | 18 | 9 | 9 | 26 | 4 | 50 | E410 |

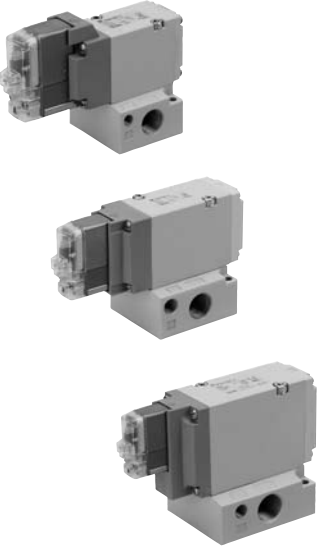

Replacement parts

| Description | Material | Part no. | | |
|-------------|----------|------------|------------|------------|
| | | Y200T | Y300T | Y400T |
| Seal | HNBR | Y200P-061S | Y300P-060S | Y400P-060S |

Series E210/310/410

Applicable Product List


Please consult SMC for any products other than those listed below.

| Name | Applicable model | | | Modular adapter | | | | | | | |
|---|------------------|--------------------------|--------------------------|-----------------|----------|----------|----------|----------|----------|----------|---|
| | Model | Port □ size | Lead wire entry | E210-U01 | E210-U02 | E310-U02 | E310-U03 | E410-U02 | E410-U03 | E410-U04 | |
| 3 port solenoid valve  | VP344 | □ | G: Grommet □ | ● | | | | | | | |
| | | 1/8□ | E: Grommet terminal □ | ● | | | | | | | |
| | | □ | T: Conduit terminal □ | ● | | | | | | | |
| | | □ | D/Y: DIN terminal □ | ● | | | | | | | |
| | | □ | G: Grommet □ | | ● | ● | | | ● | | |
| | | 1/4□ | E: Grommet terminal □ | | ● | ● | | | ● | | |
| | □ | T: Conduit terminal □ | | ● | ● | | | ● | | | |
| | □ | D/Y: DIN terminal □ | | ● | ● | | | ● | | | |
| | VP544 | □ | G: Grommet □ | | ● | ● | | | ● | | |
| | | 1/4□ | E: Grommet terminal □ | | ● | ● | | | ● | | |
| | | □ | T: Conduit terminal □ | | ● | ● | | | ● | | |
| | | □ | D/Y: DIN terminal □ | | ● | ● | | | ● | | |
| | | □ | G: Grommet □ | | | | | ● | | ● | |
| | | 3/8□ | E: Grommet terminal □ | | | | | ● | | ● | |
| | VP744 | □ | T: Conduit terminal □ | | | | | ● | | ● | |
| | | □ | D/Y: DIN terminal □ | | | | | ● | | ● | |
| | | □ | G: Grommet □ | | | | | ● | | ● | |
| | | 3/8□ | E: Grommet terminal □ | | | | | ● | | ● | |
| □ | | T: Conduit terminal □ | | | | | ● | | ● | | |
| □ | | D/Y: DIN terminal □ | | | | | ● | | ● | | |
| Direct operated 2 port solenoid valve for air  | VCA31 | □ | G: Grommet □ | | ● | ● | | ● | | | |
| | | 1/4□ | C: Conduit □ | | ● | ● | | ● | | | |
| | | □ | T/TL: Conduit terminal □ | | ● | ● | | ● | | | |
| | | □ | D/DL: DIN terminal □ | | ● | ● | | | △ | | |
| | | □ | G: Grommet □ | | | | | ● | | ● | |
| | | 3/8□ | C: Conduit □ | | | | | ● | | ● | |
| | VCA41 | □ | T/TL: Conduit terminal □ | | | | | ● | | ● | |
| | | □ | D/DL: DIN terminal □ | | | | | ● | | ● | |
| | | □ | G: Grommet □ | | | | | | | | ● |
| | | 3/8□ | C: Conduit □ | | | | | | | | ● |
| | | □ | T/TL: Conduit terminal □ | | | | | | | | ● |
| | | □ | D/DL: DIN terminal □ | | | | | | | | ● |
| 1/2 | □ | G: Grommet □ | | | | | | | | ● | |
| | □ | C: Conduit □ | | | | | | | | ● | |
| | □ | T/TL: Conduit terminal □ | | | | | | | | ● | |
| | | □ | D/DL: DIN terminal | | | | | | | ● | |

Note 1) Of the VCA series, only the coil direction-changed model X64 (90° rotation) and X65 (270° rotation) can be attached.□

Note 2) This is a table for the renewed VP series. The external pilot version cannot be attached.

Modular Adapter Series E210/310/410

| Name | Model | Port size | Applicable model | Modular adapter | | | | | | | | |
|--|-------------------------|--|--|--|----------|----------|----------|----------|----------|----------|---|--|
| | | | | E210-U01 | E210-U02 | E310-U02 | E310-U03 | E410-U02 | E410-U03 | E410-U04 | | |
| Direct operated 2 port solenoid valve  | VX21 | 1/8 | G: Grommet□ | ● | | | | | | | | |
| | | | GR: Grommet (with full-wave rectifier)□ | ● | | | | | | | | |
| | | | C: Conduit□ | ● | | | | | | | | |
| | | | CR: Conduit (with full-wave rectifier)□ | ● | | | | | | | | |
| | | | T: Conduit terminal□ | ● | | | | | | | | |
| | | | TR: Conduit terminal (with full-wave rectifier)□ | ● | | | | | | | | |
| | | | D: DIN terminal□ | ● | | | | | | | | |
| | | | DR: DIN terminal (with full-wave rectifier)□ | ● | | | | | | | | |
| | VX21 | 1/4 | □ | G: Grommet□ | □ | ● | ● | | ● | | | |
| | | | □ | GR: Grommet (with full-wave rectifier)□ | | ● | △ | | △ | | | |
| | | | □ | C: Conduit□ | | ● | ● | | ● | | | |
| | | | □ | CR: Conduit (with full-wave rectifier)□ | | ● | △ | | △ | | | |
| | | | □ | T: Conduit terminal□ | | ● | ● | | ● | | | |
| | | | □ | TR: Conduit terminal (with full-wave rectifier)□ | | ● | △ | | △ | | | |
| | | | □ | D: DIN terminal□ | | ● | △ | | △ | | | |
| | | | □ | DR: DIN terminal (with full-wave rectifier)□ | | ● | △ | | △ | | | |
| | VX222 VX223 VX224 | 1/4 | □ | G: Grommet□ | | ● | ● | | ● | | | |
| | | | □ | GR: Grommet (with full-wave rectifier)□ | | ● | ● | | ● | | | |
| | | | □ | C: Conduit□ | | ● | ● | | ● | | | |
| | | | □ | CR: Conduit (with full-wave rectifier)□ | | ● | ● | | ● | | | |
| | | | □ | T: Conduit terminal□ | | ● | ● | | ● | | | |
| | | | □ | TR: Conduit terminal (with full-wave rectifier)□ | | ● | ● | | ● | | | |
| | | | □ | D: DIN terminal□ | | ● | ● | | △ | | | |
| | | | □ | DR: DIN terminal (with full-wave rectifier)□ | | ● | ● | | ● | | | |
| | VX225 VX226 | 1/4 | □ | G: Grommet□ | | ● | ● | | ● | | | |
| | | | □ | GR: Grommet (with full-wave rectifier)□ | | ● | ● | | ● | | | |
| | | | □ | C: Conduit□ | | ● | ● | | ● | | | |
| | | | □ | CR: Conduit (with full-wave rectifier)□ | | ● | ● | | ● | | | |
| | | | □ | T: Conduit terminal□ | | ● | ● | | ● | | | |
| | | | □ | TR: Conduit terminal (with full-wave rectifier)□ | | ● | ● | | ● | | | |
| | | | □ | D: DIN terminal□ | | △ | △ | | △ | | | |
| | | | □ | DR: DIN terminal (with full-wave rectifier)□ | | ● | ● | | ● | | | |
| | | 3/8 | □ | G: Grommet□ | | | | | ● | | ● | |
| | | | □ | GR: Grommet (with full-wave rectifier)□ | | | | | ● | | ● | |
| | | | □ | C: Conduit□ | | | | | ● | | ● | |
| | | | □ | CR: Conduit (with full-wave rectifier)□ | | | | | ● | | ● | |
| □ | | | T: Conduit terminal□ | | | | | ● | | ● | | |
| □ | | | TR: Conduit terminal (with full-wave rectifier)□ | | | | | ● | | ● | | |
| □ | | | D: DIN terminal□ | | | | | △ | | △ | | |
| □ | | | DR: DIN terminal (with full-wave rectifier)□ | | | | | ● | | ● | | |
| 1/2 | □ | G: Grommet□ | | | | | | | | ● | | |
| | □ | GR: Grommet (with full-wave rectifier)□ | | | | | | | | ● | | |
| | □ | C: Conduit□ | | | | | | | | ● | | |
| | □ | CR: Conduit (with full-wave rectifier)□ | | | | | | | | ● | | |
| | □ | T: Conduit terminal□ | | | | | | | | ● | | |
| | □ | TR: Conduit terminal (with full-wave rectifier)□ | | | | | | | | ● | | |
| | □ | D: DIN terminal□ | | | | | | | | △ | | |
| | □ | DR: DIN terminal (with full-wave rectifier)□ | | | | | | | | ● | | |


Note 1) △: Interference problems could occur depending on the lead wire direction.□

Note 2) Because of vibrations on both products, chattering will occur when the VX2 series are attached directly to a regulator. Please avoid this.

Series E210/310/410

Applicable Product List


Please consult with SMC for any other products other than these listed below. □

| Name | Applicable model | | | Modular adapter | | | | | | |
|--|-------------------------|---|---|-----------------|----------|----------|----------|----------|----------|----------|
| | Model | Port □ size | Lead wire entry | E210-U01 | E210-U02 | E310-U02 | E310-U03 | E410-U02 | E410-U03 | E410-U04 |
|  | VX232 VX233 VX234 | □ | G: Grommet □ | | ● | ● | | ● | | |
| | | □ | GR: Grommet (with full-wave rectifier) □ | | ● | ● | | ● | | |
| | | □ | C: Conduit □ | | ● | ● | | ● | | |
| | | 1/4 □ | CR: Conduit (with full-wave rectifier) □ | | ● | ● | | ● | | |
| | | □ | T: Conduit terminal □ | | ● | ● | | ● | | |
| | | □ | TR: Conduit terminal (with full-wave rectifier) □ | | ● | ● | | ● | | |
| | | □ | D: DIN terminal □ | | ● | ● | | ● | | |
| | | □ | DR: DIN terminal (with full-wave rectifier) □ | | ● | ● | | ● | | |
| | | □ | G: Grommet □ | | ● | ● | | ● | | |
| | VX235 VX236 | □ | GR: Grommet (with full-wave rectifier) □ | | ● | ● | | ● | | |
| | | □ | C: Conduit □ | | ● | ● | | ● | | |
| | | 1/4 □ | CR: Conduit (with full-wave rectifier) □ | | ● | ● | | ● | | |
| | | □ | T: Conduit terminal □ | | ● | ● | | ● | | |
| | | □ | TR: Conduit terminal (with full-wave rectifier) □ | | ● | ● | | ● | | |
| | | □ | D: DIN terminal □ | | ● | ● | | ● | | |
| | | □ | DR: DIN terminal (with full-wave rectifier) □ | | ● | ● | | ● | | |
| | | □ | G: Grommet □ | | | | ● | | ● | |
| | | □ | GR: Grommet (with full-wave rectifier) □ | | | | ● | | ● | |
| | 1/2 □ | □ | C: Conduit □ | | | | ● | | ● | |
| | | 3/8 □ | CR: Conduit (with full-wave rectifier) □ | | | | ● | | ● | |
| | | □ | T: Conduit terminal □ | | | | ● | | ● | |
| | | □ | TR: Conduit terminal (with full-wave rectifier) □ | | | | ● | | ● | |
| | | □ | D: DIN terminal □ | | | | ● | | ● | |
| | | □ | DR: DIN terminal (with full-wave rectifier) □ | | | | ● | | ● | |
| | | □ | G: Grommet □ | | | | | | | ● |
| | | □ | GR: Grommet (with full-wave rectifier) □ | | | | | | | ● |
| | | □ | C: Conduit □ | | | | | | | ● |
| 1/2 □ | □ | CR: Conduit (with full-wave rectifier) □ | | | | | | | ● | |
| | □ | T: Conduit terminal □ | | | | | | | ● | |
| | □ | TR: Conduit terminal (with full-wave rectifier) □ | | | | | | | ● | |
| | □ | D: DIN terminal □ | | | | | | | △ | |
| | | □ | DR: DIN terminal (with full-wave rectifier) □ | | | | | | ● | |

Note 1) △: Interference problems could occur depending on the lead wire direction. □

Note 2) Because of vibrations on both products, chattering will occur when the VX2 series are attached directly to a regulator. Please avoid this.

Modular Adapter Series E210/310/410

| Name | Applicable model | | | Modular adapter | | | | | | | | |
|--|------------------|-----------|--|--|----------|----------|----------|----------|----------|----------|---|---|
| | Model | Port size | Lead wire entry | E210-U01 | E210-U02 | E310-U02 | E310-U03 | E410-U02 | E410-U03 | E410-U04 | | |
| Pilot operated 2 port solenoid valve  | VXD213 | 1/4 | G: Grommet□ | | ● | ● | | ● | | | | |
| | | | GR: Grommet (with full-wave rectifier)□ | | ● | ● | | ● | | | | |
| | | | C: Conduit□ | | ● | ● | | ● | | | | |
| | | | CR: Conduit (with full-wave rectifier)□ | | ● | ● | | ● | | | | |
| | | | T: Conduit terminal□ | | ● | ● | | ● | | | | |
| | | | TR: Conduit terminal (with full-wave rectifier)□ | | ● | ●□ | | ●□ | | | | |
| | | | D: DIN terminal□ | | | △ | △ | | △ | | | |
| | | | DR: DIN terminal (with full-wave rectifier)□ | | | △ | △ | | △ | | | |
| | VXD213 | 1/2 | □ | G: Grommet□ | □ | | | | | | ● | |
| | | | □ | GR: Grommet (with full-wave rectifier)□ | | | | | | | ● | |
| | | | □ | C: Conduit□ | | | | | | | ● | |
| | | | □ | CR: Conduit (with full-wave rectifier)□ | | | | | | | ● | |
| | | | □ | T: Conduit terminal□ | | | | | | | ● | |
| | | | □ | TR: Conduit terminal (with full-wave rectifier)□ | | | | | | | ● | |
| | | | □ | D: DIN terminal□ | | | | | | | △ | |
| | | | □ | DR: DIN terminal (with full-wave rectifier)□ | | | | | | | △ | |
| | VXD214 | 3/8 | □ | G: Grommet□ | | | | ● | | ● | | |
| | | | □ | GR: Grommet (with full-wave rectifier)□ | | | | ● | | ● | | |
| | | | □ | C: Conduit□ | | | | ● | | ● | | |
| | | | □ | CR: Conduit (with full-wave rectifier)□ | | | | ● | | ● | | |
| | | | □ | T: Conduit terminal□ | | | | ● | | ● | | |
| | | | □ | TR: Conduit terminal (with full-wave rectifier)□ | | | | ● | | ● | | |
| | | | □ | D: DIN terminal□ | | | | △ | | △ | | |
| | | | □ | DR: DIN terminal (with full-wave rectifier)□ | | | | △ | | △ | | |
| | | 1/2 | □ | G: Grommet□ | | | | | | | | ● |
| | | | □ | GR: Grommet (with full-wave rectifier)□ | | | | | | | | ● |
| | | | □ | C: Conduit□ | | | | | | | | ● |
| | | | □ | CR: Conduit (with full-wave rectifier)□ | | | | | | | | ● |
| □ | | | T: Conduit terminal□ | | | | | | | | ● | |
| □ | | | TR: Conduit terminal (with full-wave rectifier)□ | | | | | | | | ● | |
| □ | | | D: DIN terminal□ | | | | | | | | △ | |
| □ | | | DR: DIN terminal (with full-wave rectifier)□ | | | | | | | | △ | |
| VXZ22 | 1/4 | □ | G: Grommet□ | | ● | ● | | ● | | | | |
| | | □ | GR: Grommet (with full-wave rectifier)□ | | ● | ● | | ● | | | | |
| | | □ | C: Conduit□ | | ● | ● | | ● | | | | |
| | | □ | CR: Conduit (with full-wave rectifier)□ | | ● | ● | | ● | | | | |
| | | □ | T: Conduit terminal□ | | ● | ● | | ● | | | | |
| | | □ | TR: Conduit terminal (with full-wave rectifier)□ | | ● | ● | | ● | | | | |
| | | □ | D: DIN terminal□ | | △ | △ | | △ | | | | |
| | | □ | DR: DIN terminal (with full-wave rectifier)□ | | ● | △ | | △ | | | | |
| | 1/2 | □ | G: Grommet□ | | | | | | | | ● | |
| | | □ | GR: Grommet (with full-wave rectifier)□ | | | | | | | | ● | |
| | | □ | C: Conduit□ | | | | | | | | ● | |
| | | □ | CR: Conduit (with full-wave rectifier)□ | | | | | | | | ● | |
| | | □ | T: Conduit terminal□ | | | | | | | | ● | |
| | | □ | TR: Conduit terminal (with full-wave rectifier)□ | | | | | | | | ● | |
| | | □ | D: DIN terminal□ | | | | | | | | △ | |
| | | □ | DR: DIN terminal (with full-wave rectifier)□ | | | | | | | | △ | |

Note 1) △: Interference problems could occur depending on the lead wire direction.□

Note 2) Because of vibrations on both products, chattering will occur when the VXD/VXZ series are attached directly to a regulator. Please avoid this.



Series E210/310/410 Specific Product Precautions

Be sure to read before handling.

For Safety Instructions, refer to “Handling Precautions for SMC Products” (M-E03-3).

Mounting

Caution

The seal surface of the product to be attached requires the modular adapter O-ring seal surface as shown in Table 1.

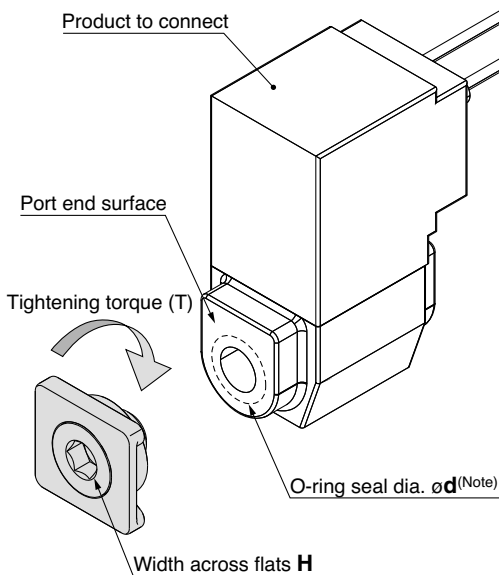
In addition, when tightening the modular adapter please refer to table 2 for the proper tightening torque.

Table 1: Required O-ring seal diameter for the mating product

| Part no. | Port size | ød |
|----------|-----------|------------|
| E210-U01 | 1/8□ | Over 14.5□ |
| E210-U02 | 1/4□ | Over 18□ |
| E310-U02 | 1/4□ | Over 18□ |
| E310-U03 | 3/8□ | Over 22□ |
| E410-U02 | 1/4□ | Over 18□ |
| E410-U03 | 3/8□ | Over 22□ |
| E410-U04 | 1/2 | Over 27 |

Table 2: Hexagonal hole dim. & tightening torque

| Part no. | Port size | Width across flats H | Recommended tightening torque (N·m) |
|----------|-----------|----------------------|-------------------------------------|
| E210-U01 | 1/8□ | 6□ | 9 to 11□ |
| E210-U02 | 1/4□ | 8□ | 14 to 16□ |
| E310-U02 | 1/4□ | 8□ | 14 to 16□ |
| E310-U03 | 3/8□ | 10□ | 24 to 26□ |
| E410-U02 | 1/4□ | 8□ | 14 to 16□ |
| E410-U03 | 3/8□ | 10□ | 24 to 26□ |
| E410-U04 | 1/2 | 12 | 30 to 32 |

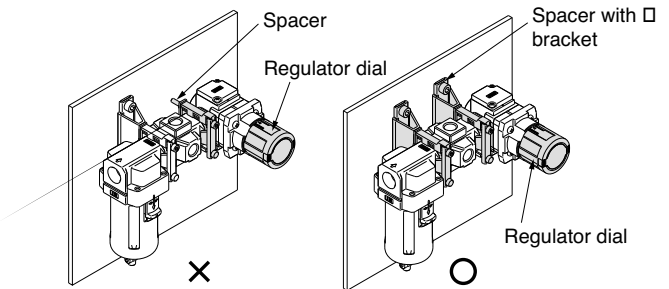


Note) The surface roughness of the seal surface of the product to be mated to the modular adapter must be less than Rz25.

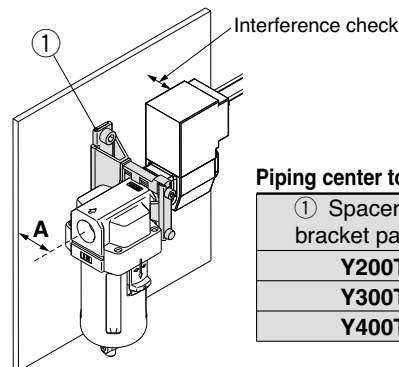
Selection

Warning

- When utilizing a regulator or a pressure relief 3 port valve with an operator (dial, etc), assure that a large moment is not exerted on the bracket spacer when placing the product. Be sure to utilize a T-Bracket (Y200T/Y300T/Y400T) in the appropriate space in order to alleviate this.



- When making the product selection and mounting to a wall, determine the distance to the wall from the center of pipe (A dimension) and make your selection of the product so that, when attached, the product selected does not run into the wall.

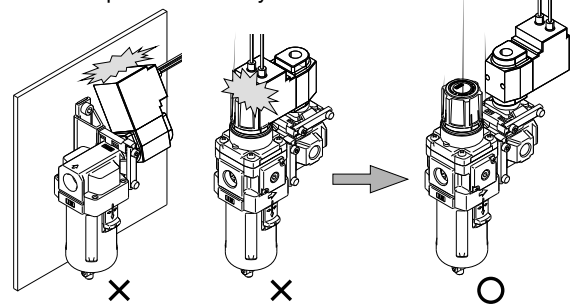


Piping center to wall surface distance

| ① Spacer with □ bracket part no. | A |
|----------------------------------|-----|
| Y200T | 30□ |
| Y300T | 41□ |
| Y400T | 50 |

- Give careful thought to the attachment angle, and assure that the attached product does not run into the wall mount prior to product selection.

In addition, assure that the product selected will not interfere with other products nearby.



- In the event that the customer is unable to determine the interference prior to product selection, please contact SMC.

Caution

- If products of brands other than SMC's are connected, this product is no longer guaranteed.